

SPRING 2023

# Sewing *with* STYLE

AMAZING  
SPRING  
OFFERS



OFFER PRICE  
**£219**  
SAVE £40

Easy to use,  
with a 1-step  
buttonhole!

## J3-20

- 20 built-in stitch choices
- Auto 1-step buttonhole
- Variable stitch length
- Built-in needle threader
- Quick foot conversion
- Drop feed for freehand embroidery
- Convertible free arm
- Soft cover

[janome.co.uk](http://janome.co.uk)

# JANOME

The world's leading sewing machine manufacturer

## HOW TO CHOOSE...



### MECHANICAL MODELS

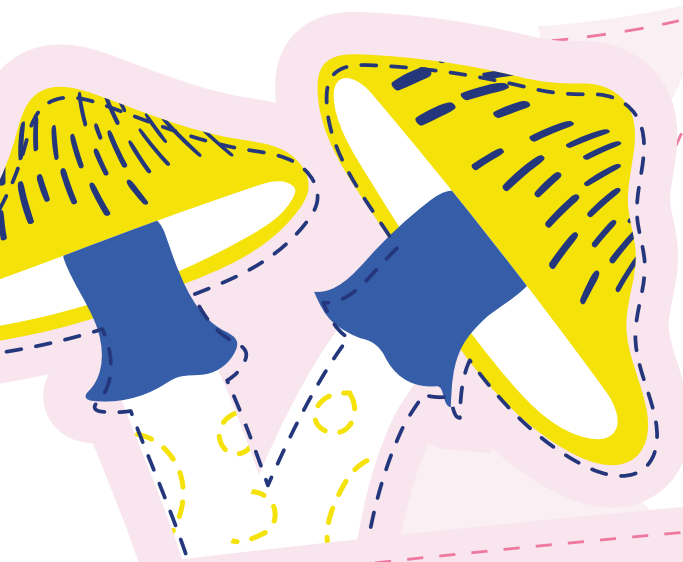
Mechanical sewing machines are basic entry level models, with limited features and stitches. Models can have a 4-step or 1-step buttonhole facility and may have an automatic needle threader. They can sew most fabrics and be very robust however lower-priced models in this category are better suited to sew light to medium-weight fabrics. Generally, they will have a convertible free arm which is used to help sew around sleeves and trouser legs. There are two types of bobbin systems used for mechanical models. One is a front-loading system where the bobbin is inserted into a bobbin case and then slotted into a front opening on the arm of the machine. The second type is a top loading, full rotary hook system for an easy jam proof operation. This system also offers a clear view cover for the bobbin area which allows for monitoring of the bobbin thread level.

### COMPUTERISED MODELS

Computerised sewing machines are suitable for both beginners and more experienced sewists. They are more versatile machines with added features which help to make sewing easier, with more precise control and greater needle penetration power to easily handle thicker and speciality fabrics. Everything is made easy as these machines offer many different stitch options which are selected by pressing a key or using the LCD touch display screen. Computerised models feature the ability to precisely control the sewing speed and adjust the stitch settings. Some models may have a memory facility to memorise favourite stitches, alphabet and stitch combinations. A lock stitch button finishes off all of your ends and a scissors button can trim threads automatically before removing the fabric.

### OVERLOCKER MODELS

Professionally finish projects inside and out, on even the finest stretch knits and speciality fabrics! The main benefit of an overlocker (also known as serger) is that it can sew a seam, finish the edge and trim off the excess fabric all in one step. Unlike sewing machines, overlockers cannot sew buttonholes or zips. You can sew a seam together and finish the edges with a 4-thread finish. For open seams use a 3-thread finish and create fine rolled hems with 3 or 2 threads on the finest of fabrics. See the air threading AT2000D Professional for the easiest threading overlocker we've ever made!



2200XT

USUAL PRICE  
**£189**



J3-18

USUAL PRICE  
**£219**



J3-24

USUAL PRICE  
**£299**

**MECHANICAL MODELS**



**SPECIAL PURCHASE**  
Ask your local retailer for discounted price

**219S**

- 14 Stitches
- Auto 4-step buttonhole
- Variable stitch length
- Convertible free arm
- Quick change snap on feet

*Perfect for beginners!*



423S

**USUAL PRICE**  
**£369**



725S

**USUAL PRICE**  
**£379**



HD 2200

**USUAL PRICE**  
**£459**



230DC

USUAL PRICE  
**£439**



5060QDC

USUAL PRICE  
**£549**

Buy the 230DC's big sister for the same price!

## 360DC

- 60 Built-in stitches
- 7 styles of auto 1-step buttonhole
- Top loading jam proof bobbin
- Built-in needle threader
- Drop feed for freehand embroidery
- Start/Stop button
- Speed control slider
- Foot pressure adjustment
- Lock stitch feature
- LCD display
- LED lamp
- Convertible free arm
- Hard cover & extension table included



OFFER PRICE  
**£439**  
SAVE £30

Easy to use... make the right choice first time!



## 740DC

- 40 built-in stitches

OFFER PRICE  
**£499**  
SAVE £130

## MAIN FEATURES

(740DC + 780DC):

- 3 styles auto 1-step buttonhole
- 20 direct large stitch selection keys
- Easy set, drop-in bobbin
- Built-in needle threader
- Built-in stitch reference chart(s)
- Start/Stop button
- Up to 7mm stitch width
- Up to 5mm stitch length
- Up to 4mm length triple straight stitch
- LCD display
- LED light
- Drop feed for free hand embroidery
- Convertible free arm
- Hard cover

Easy selection and a wide stable working area!

Great deals, BIG savings!



## 780DC

- 80 built-in stitches
- Auto thread cutter (scissors button)

OFFER PRICE  
**£549**  
SAVE £130

## COMPUTERISED MODELS

### DKS30SE

- 30 stitch choices
- 3 styles of auto 1-step buttonholes
- Easy set, drop in bobbin with unique bobbin winding system
- Built-in needle threader
- Auto thread cutter (scissors button)
- LCD display screen
- Variable stitch width & length
- Stitch elongation up to 5 times
- Drop feed for free hand embroidery
- Convertible free arm
- Hard cover



Free kit  
with extension  
table included

OFFER PRICE  
**£549**  
SAVE £50

*Easy to use, contemporary choice!*



Free kit  
with extension  
table included

OFFER PRICE  
**£599**  
SAVE £60

### DKS100SE

- 100 stitch choices
- 6 styles of auto 1-step buttonholes
- Easy set, drop in bobbin with unique bobbin winding system
- Built-in needle threader
- Auto thread cutter (scissors button)
- LCD display screen
- Variable stitch width & length
- Stitch elongation up to 5 times
- Knee lift
- Drop feed for free hand embroidery
- Convertible free arm
- Hard cover



## COMPUTERISED MODELS



Mmm... more accessories  
included as standard!



OFFER PRICE  
**£599**  
SAVE £50

### M50QDC

- 50 built-in stitches incl. 3 styles of auto 1-step buttonholes

### MAIN FEATURES (M SERIES):

- Easy set, drop in bobbin
- Built-in needle threader
- Speed control slider
- Start/Stop button
- Foot pressure adjustment
- LCD display
- LED light
- Drop feed for free hand embroidery
- Convertible free arm
- Extension table
- Hard cover



OFFER PRICE  
**£649**  
SAVE £50

### M100QDC

- 100 built-in stitches incl. 7 styles of auto 1-step buttonholes
- Auto thread cutter (scissor button)



OFFER PRICE  
**£699**  
SAVE £50

### M200QDC

- 200 built-in stitches incl. 12 styles of auto 1-step buttonholes, plus alphabet
- Auto thread cutter (scissor button)



## 5270QDC

A free arm machine for everyone who loves to sew. There are 270 stitch choices, both practical and decorative, including an alphabet with English and European letters, plus a built-in memory. Suitable for twin needle sewing. Quilters will love the knee lift and a walking foot, free motion embroidery foot, open toe craft/applique foot, seam & quilting guides are all included. With a needle threader and an easy set, drop in bobbin plus bright LED lighting, 3 x optic magnifiers included (x20, x40, x60) you can sew at any time of day or night. An extension table and hard cover are included.

OFFER PRICE  
**£749**  
SAVE £100

*Exciting, refined features  
to help your projects shine!*



## Atelier 3

Larger 210mm (8 1/4") arm space with free arm and a clear LCD screen to help you select from the 120 stitches, including 7 auto 1-step buttonholes and an alphabet. LED lighting, an easy set bobbin, an automatic needle threader, a maximum speed controller, a Start/Stop button, auto-lock and auto thread cutter all help make your sewing easier.

*Extra space for all types of sewing!*



OFFER PRICE  
**£879**  
SAVE £70

## Atelier 6

With 210mm (8 1/4") of arm space to the right of the needle, this amazing free arm machine has 196 stitches, 9mm stitch width, an under bed cutter and knee lift. The superior AcuFeed Flex layered fabric feeding system ensures stable sewing at speeds of up to 1,000spm. The LCD screen has 8 direct stitch selection keys for commonly used stitches, plus easy access to functions. All the refinements at your fingertips to help you create your dream projects.



OFFER PRICE  
**£1,199**  
SAVE £180

*Larger arm space  
& 9mm stitch width!*



Atelier 7

USUAL PRICE  
**£1,629**

## OVERLOCKER MODELS

### 8002DG

- Colour coded thread guide for easy threading
- Uses standard ball point needles
- Differential feed
- Easy rolled hem
- Retractable knife for decorative overlocking

*Great value,  
entry level  
3 & 4 thread  
overlocker!*



**SPECIAL PURCHASE**  
Ask your local retailer for discounted price



**FREE WORKBOOK**

**OFFER PRICE**  
**£999**  
**SAVE £150**

### AIR THREAD 2000D PRO

- One push air blast threading system
- 2, 3 or 4 thread overlocking & rolled hem
- Colour coded easy threading
- Integrated dial with differential feed
- Uses standard ballpoint needles
- Sews up to 1,500spm

*Change threads easily...  
Air Flow Go!*



9300DX

**USUAL PRICE**  
**£329**



6234XL

**USUAL PRICE**  
**£549**

The 'Sewing with Style' offers are available from authorised Janome sewing machine retail outlets nationwide. Promotion starts **3rd April 2023 until 3rd June 2023**. (All offers subject to stock availability)

**JANOME**  
janome.co.uk